

BREAKING NEWS

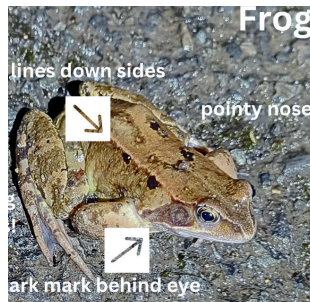
Daring Amphibian Rescue!

A few fellow villagers and I were slightly bounced into being Toad Patrollers in early February. An issue with the A46 meant more evening traffic than usual along Southfield Road.

Next morning Sylvia May was horrified to find numerous squashed toads and spread the word. The village sprang into action – signs, new Whatsapp group, Facebook posts, and – most importantly – we dug out waterproofs, hi-vis, buckets and torches and started patrolling around dusk on evenings when the temperature was over 5°.

Since then we've registered with Gloucestershire Toads on Roads and collected data; met new people; chatted to, and shown toads to, lots of people and their children; spread the word to the school, Brownies and Guides; been filmed; found out where some of the garden ponds are (and what lives in them); and we've all learnt a lot about toads, frogs and newts.

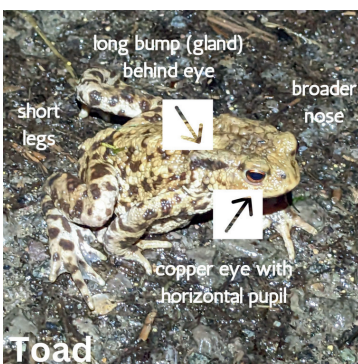
We've learnt where they are migrating to (we didn't even know which way they were crossing the road the first night), and we've enjoyed looking for them, watching them and being able to help. Anecdotally the number of squashed toads is well down on previous years.



Southfield Road is the main site, with Church Road also busy. Where possible we've been down to Frogmarsh Lane/Convent Lane where we know there is another crossing site. You'd be very welcome if you would like to help next year - keep an eye out for posts on the Woodchester Facebook pages.

The migration is tailing off now towards the end of March – mostly we see 1 or 2 toads, coming back the other way, hopefully having successfully bred. It's a small toad crossing – our peak was 53 on Feb 15th - but it's important to us, and we're looking forward to next year!

Numbers: toads safe 261, frogs safe 58, newts safe 3. Total 322. Casualties 31.



In This Issue:

Woodchester Open Gardens	2
Orchard Pastures News	2
Parish Council News	3
Meet the Parish Council	4
News from St Mary's	5
Water Lane Editorial	6
Boundary Court	6
National Trust News	7
Woodchester Endowed Church of England Primary School	8
Woodchester Guides	9
Longfield Hospice	9
Village Interest	10
Women's Institute	11
Woodchester Mansion	11
Business Directory	12
Village Contacts	12



Woodchester Open Gardens

7th July 2024 2-5pm



Fish ponds and fountains; colour and shade; perhaps even a model railway? Who knows what you will discover on our walking trail of gardens throughout the village. Entry by programme in advance available from the village shop or from participating gardens on the day.

Teas and wildlife themed activities in the church yard. If you would like to participate by opening your garden it's not too late. *Please contact Katharine McNealey: kathinwoodchester@gmail.com*

Orchard Pastures News

We are in the process of change as an organisation, and will become a Community Benefit Society – a type of co-operative - this year. We are doing this to secure the land for the community in the long-term, so future generations of villagers can easily take on the stewardship of the land. We will let you know more in the next edition of the Woodchester Word.

At the moment all our allotments are rented, but we keep a waiting list.



Orchard Workshop

In February we held a free pruning workshop with expert Martin Hayes (as seen on Countryfile!). It was an excellent day for learning about fruit tree pruning and getting hands-on experience in our orchard.

-Martin Hayes, expert orchardist, leads the pruning workshop



-Villagers toast the trees at the wassail

Wassail Celebration

We had a lovely turn-out for our annual wassail in January. Music was led by the wonderful Rodborough Folk choir and many villagers also joined us at the village hall afterwards, with a drink from the Royal Oak and home made wassail cake.



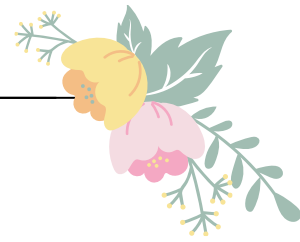
Work Party

We will be holding work parties to maintain the land every third Saturday of the month from 18 May onwards.

10-11.30am, with refreshments. Do come along and join us – it's fun, friendly and a convivial way to meet fellow villagers.

Where to find us...

Orchard Pastures is the land below The Ram owned by a group of villagers. If you'd like to find out more, please email: swalt.org@gmail.com or phone Bert Cossins on 872407.



Parish Council News

A Changing Council

The 2023-24 Parish Council year has been full of change.

We gave our thanks to Ian Dunbar and Liz Hasinski who left their positions as Councillors. After receiving no nominations for elections, a co-option took place where we welcomed Councillor Richard Evans, Councillor Graham Denny and Councillor Nathan Potter as new members of the Parish Council.

We will introduce half of the Parish Council this quarter and add the other introductions to the next edition of Woodchester Word. Please feel free to come and meet us in person at our Parish Council meetings (you will find details on the website and noticeboards).

We love engagement from our community and would like to hear your ideas and suggestions for the Parish.

We recognise that changes have been happening outside of the Parish Council too and we would like to welcome new residents who have moved to the village recently and reintroduce ourselves to those who may not recognise us.

Village Maintenance News



During the year the focus of the Parish Council has been centred around Village Maintenance and bettering the environment that we live in.

Our contractor has been instructed to carry out lots of mowing and strimming to keep sightlines clear at junctions, nettles and hedges have been cut back to keep pathways clear and we have kept our bus shelters and stops clear of debris.

Our clerk has been in regular communication with Gloucestershire Highways to have damaged drains fixed, blocked drains cleared and overhanging trees maintained.

Community Litter Pick In March we held a community litter pick. We would like to once more thank everyone who attended and helped clear the litter and fly tipping from our Parish.



Play Area surface chippings have been refreshed and are ready for another year.

We resurfaced the play area with a higher quality wood which should be longer lasting and apparently provide a softer landing for the children. We would love to have volunteers help us maintain the plants and the appearance of our play area, and other areas of the village, if you would like to help, please get in touch.



Playground Facelift

Local playground gets a refresh

Our village playground has had a top up! The play equipment is now over a year old and has stood the test of time and is still looking good. But the wet winter had taken a toll on the wood chip surface of the play area and in order to meet safety standards the Parish Council agreed that the surface needed to be replenished. Thanks to the lovely chaps from Discovery Timber Play who came along on a dry day in April with twelve huge sacks of playground grade pine chippings and raked it all into place. It not only looks smart, but it's not so muddy now, and it smells nice too!



Meet the Parish Council

Katharine McNealey

*Vice Chairman
Strategic Planning,
Snow Warden
North Woodchester*

Telephone: 07514 024 034
katharine@woodchesterparish.org.uk



I originally moved to Woodchester in 1992 and although we lived for seven years in the USA we came back to Woodchester because we like it so much here! I worked for many years for the Countryside Agency (now Natural England) where I was responsible, among other things for developing policy on access to the Countryside. I have also worked for the National Trust and the Wildlife Trusts movement. I am now early retired and a volunteer coach for the National Charity Riding for the Disabled. My husband Brian is a retired aerospace engineer and active volunteer with Cotswold Canal Trust. We have two adult children who have now left home. I have been on the Parish Council for over twelve years now. We live in a beautiful place and we should do our best to look after the environment, get to know each other and build a strong sense of community.

Peter Lead

*Chairman
Planning, Snow Warden South
Woodchester*

Telephone: 07768 88 19 50
peter@woodchesterparish.org.uk

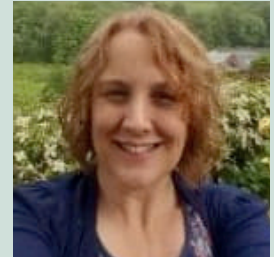


I have been a Councillor for some 15 years and have chaired the PC for several of those years. I am semi retired and live in Convent Lane with my wife Dawn and our daughter Becky and granddaughter Daisy who live in an annexe. I enjoy gardening, beekeeping, golf and practice Ki-Aikido. I run Stroud BuzzClub in the Walled Garden behind the Museum where young children come to learn about bees and all pollinators and their importance in our food chain.

Caroline Noon

*Community Engagement &
Public Rights of Way
North Woodchester*

Telephone: 07980 296865
caroline@woodchesterparish.org.uk



I've lived in the village for just over 8 years and I have links with the National Trust through my role as an Apprenticeship Manager. I have volunteered at our monthly "Lunch with friends" since moving here and am keen to support opportunities to get villagers of all ages together. I love walking and cycling and am passionate about making our footpaths accessible for all. I am also a keen gardener and love spending time in nature whenever I can.

Looking Ahead...

As we head into a new council year, we are aiming to continue our drive for a tidy village and will work with contractors and volunteers to achieve this. The councillors each have a project to work on and we will update you on progress throughout the year, but look out for changes to the appearance and function of our website, surface maintenance at the bike track, new planters in the village and community events to get involved in.



News from St Mary's Church - Here to Help

There's been a parish church in Woodchester since at least the 9th century and through all the ups and downs of history, it's been a place of worship & celebration, of comfort in times of loss and a sanctuary for peace and reflection. While continuing this important role, St Mary's nowadays is also keen to play a much wider role serving our community. Take a look below...



Calling 'Village Elders' ...plus all cooks and bottle-washers

Our **'Lunch-with-Friends'** club for Woodchester's elders (& betters) meets monthly in church welcoming old friends and new over a delicious meal. Whether you've lived in the village for 70 years or moved in last week, you'd be so welcome to join us. We'd also love to hear if you have time to help one of our 3 teams of lunch club volunteers. Could you spare a few hours on a Friday once a quarter?

Guest or helper – call Liz on 07974 911016 or Christina on 07968 159779 to find out more.



Calling Families and Children

Woodchester's weekly **Little Stars** group for the under 5s and their carers runs 9.30 – 11.30 every Monday morning in the church undercroft. With activities, stories, snacks and coffee it is a great opportunity for you and your toddler to unwind and have fun.

Call Elaine on: 07974 208714

St Mary's famous **Messy Church** is held one Wednesday afternoon each month in term time. Buzzing with up to 90 children and their carers it involves creative activities such as cooking and crafts plus lively games, singing and stories, all fuelled by home-made cakes and squash. The wonderful themed parties held 2 or 3 times a year are especially loved. No booking needed.



Eco-Church Taking care of God's Creations

St Mary's is participating in the Eco-Church scheme run by a non-denominational Christian charity called 'A ROCHA' (See green notice board in church). The scheme encourages us to care for God's creation and rewards progress towards fully-sustainable practices via a pathway of Bronze, Silver and Gold awards.

Interested?... We meet for monthly Saturday breakfasts, alternating between Woodchester, Rodborough and Brimscombe churches and all are welcome. Discussion topics range from things we can do as individuals (e.g. sustainable clothing, re-using & recycling and calculating our personal carbon "footprint") to group initiatives for the church such as rewilding, energy economy and standardising on eco-friendly products.
www.arocha.org.uk

Calling all Music Lovers St Mary's Summer Concert Season

Saturday June 8th 7.30 pm Capriol Chamber Orchestra

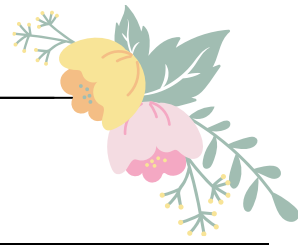
Friday June 14th 7.00pm Five Valleys Voices

Saturday July 13th 7.30pm (tbc) Nailsworth Silver Band
Keep your eyes out for the posters

Calling all...

Prayer requests left on our prayer tree or on the altar will always be prayed for.

Members of our congregation also participate in a broad range of support organisations – from CAP UK (Christians Against Poverty) to the Samaritans. If we can help, we'll point you in the right direction. Let us know.
The Rector, Peter Francis, can be reached on 01453 759680.



Water Lane Editorial

Water Lane is a delightful lane, with a great deal of history, being part of the ancient road from Forest Green to Gloucester, with much wildlife to enjoy in the banks and hedgerows, but its condition has deteriorated rapidly during the last few years.

Gloucestershire County Council has occasionally (approximately once during the last ten years, if we are counting) cleared the surface of leaves, mud and debris, and the hedges are cut back in places in the autumn in the usual way that landowners choose.

However, in the dip where the stream crosses the lane, the boundary between the parishes, the surface was repaired but still collects water run-off from the field and mud. Where the drains are blocked with debris, the water runs down the side of the lane and is steadily eroding a gully. After rain, it isn't easy walking down the steep part nearer to Water Lane Cottage without the danger of slipping over. Will the lane ever be cleaned up, so that it isn't slippery with mud and leaves? It is still legally a highway. Not that we want it opened to traffic again, but the obvious answer is to make the lane clean and surfaced satisfactorily for walkers to enjoy, then close the road to through traffic (but allowing Water Lane residents access, of course.)

Is this too much to ask?
Rod Harris



Boundary Court Barn

The old barn in Boundary Court has been in a dilapidated and unsafe state for many years, gradually succumbing to the vagaries of our Gloucestershire weather.

Now, the National Trust which owns and manages Boundary Court with those delightful belted galloway cattle, is planning to restore the barn and make it into a place for walkers to sit or rest. This will certainly tidy up what has been an untidy corner of the path round Boundary Court.

The little lakes are becoming integrated into the ground now looking much more natural and hopefully will encourage further diversification of the wildlife in the area. The wild flowers are looking beautiful at the moment too.

Sitting at the end of the horseshoe and looking towards Rodborough Common is a real treat at this time of the year!

News from National Trust at Woodchester Park

Since we opened our site at Tinkley Gate, we have been working hard to involve local communities and reach out to welcome everybody to our site. There has also been a programme of countryside works across Woodchester Park that focusses on habitat improvement. We were delighted to see so many of you enjoy our sites during a successful easter break, and as we gear up towards some hopefully better weather, we mark one year since Tinkley Gate opened to the public on 24 th July. Here are some things we have been doing over the past year, plus some events everyone in the community can get involved in over the summer season.



Countryside Updates

Alongside hosting trainee ecologists recently to carry out newt surveys in our pond at Tinkley Gate, we have continued to improve the landscape for a wide range of species, enhancing grassland across much of the park with the **Stroud Landscape Project** carrying out reseeding over the winter.

We've carried out ride creation work within the park, thinning out plants to create the opportunity for more light to reach the woodland floor, and also continued our work on **ancient woodland restoration** including replacing conifer with a more diverse range of native trees.

At Tinkley Gate, we've also begun extensive tree planting, starting with **32 heritage apple trees**.

Summer Events

We are pleased this to announce our **first ever open-air theatre production at Tinkley Gate** run by The Three Inch Fools.

Presenting their own take on Shakespeare's Comedy of Errors, the performance takes place on **17 th September 2024**. Gates open from 18:00 so people can set up chairs, blankets and picnic spots. **Early-bird tickets** are now available until 30 th June – visit Eventbrite for more information and to book.

From a nature perspective we're also pleased to be hosting two moth trapping events in **July and August**. Run by the Stroud Valleys Project, traps will be set overnight for a morning release.

Visit the 'upcoming events' section of the Woodchester Park website under 'Things to Do'.



Café at Tinkley Gate

We have continued to develop the offering at the café at Tinkley Gate.

Now also encompassing a well-stocked second-hand bookstore that also houses a newly acquired Trampler all-terrain mobility vehicle, this aids accessibility across the site and can be booked by phoning 01453 860037 or emailing woodchesterpark@nationaltrust.org.uk.

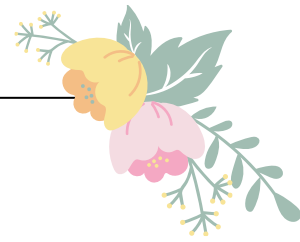


For those of you who haven't yet sampled the breakfast menu, we launched this recently and continue to serve bacon, sausage or vegan sausage breakfast rolls. As ever, our homemade wood-fired pizzas continue to prove popular.

Get in Touch

If you have any questions or queries, or simply would like to let us know what updates would be of most interest to you, get in touch with us at woodchesterpark@nationaltrust.org.uk.

Find us on Facebook and Instagram @NTCotswolds



Woodchester Endowed Church of England Primary School

Safer Internet Day

The online world has changed enormously in the last few years, for young children. Even since my children were primary aged.

Children access the internet in many different ways and with incredible ease these days. School, alongside parents, support our young children in doing so. It's important to teach them how to be safer while doing it.

Recently, we held a Safer Internet Day exploring how the internet can influence the way that young people think, feel and act online and offline. Through this work, children in Ash Class learnt how to use a tablet safely. Beech Class used a story scenario to think about how they might react to a difficult situation and Juniper and Willow classes considered the role of social influencers across the internet.

To help school and our parents deal with this increasingly complex work, we have signed up to a new information service which provides regular updates on internet safety and will continue to share these comprehensive and vital updates.

Community Links

We very much cherish our links with the local community.

Our Eco Committee met with Peter, a Parish Councillor, to learn about how they could help on projects within the community.

We are now looking forward to continuing to support the new play area by visiting, checking and reporting on the wildlife that's observed.



They also enjoyed learning about the Woodchester Litter Pick as well as the Stroud Buzz Club which is for anyone who would like to support bees! It has been a busy half term for the Eco Committee who organised their very own Eco-Day in order to fundraise to buy seed, plants and bird feeders to help our local wildlife.

Out & About

The children and staff have also been getting 'out and about' a little as well, taking part in a variety of different trips.

This included a very special Christingle Service led by Bishop Rachael at Gloucester Cathedral, a blustery visit to WWT Slimbridge to compare different wildlife in the wetland habitat, a netball tournament at Stratford Park and a very exciting Cross Country run in extremely testing and challenging conditions.



In January, just as we returned from the Christmas holiday, forty children and staff journeyed to sing as part of Young Voices '24 at the Resorts World Arena, Birmingham.



Singing as part of a choir of almost five thousand at such a venue with a wonderfully enthusiastic audience was quite an experience and everyone had a fantastic time.



A little closer to home but still a great evening, our team of twelve country dancers took part in the reinstated Country Dancing Festival. Everyone was extremely excited that it was happening again as it had been very much missed.

The children's dancing was accompanied by the Downfielders Folk Group and everyone had a fantastic time and lots of fun.

Although last term was unusually short, we still packed in lots of great experiences as well as some fantastic learning. Well done, everyone!



Girlguiding Woodchester

Last term came to its conclusion as Woodchester Brownies joined Whiteshill Rainbows to watch Forest Green Rovers play Walsall, meeting the mascot, having face painting done and eating chips!

Woodchester Guides meanwhile joined Guides from Mid-Glos Division for a bowling evening in Stroud. At the final meeting of term both Brownies and Guides took part in an Easter egg hunt.

This term we have lots of outdoor exciting activities planned. We are starting with building dens and then we will be tracking and trailing around the village, holding an outdoor games and sports evening, participating in a bubble themed evening and the Guides will also be cooking outdoors on a campfire. In June the Guides also have the opportunity to join.

Teddy Bears Picnic – In May Brownies and Guides are planning on having a teddy bears picnic with games and activities. If any girls aged between 6 and 13 years would like to join us (free of charge) for that evening. Please see contact information below.

Nailsworth Guide Camp - In June the Guides also have the opportunity to join Nailsworth Guides at Guide camp. *Girls aged between 7 and 9 (Brownies) and 10 and 13 (Guides) are very welcome to join us as members of Girlguiding. We'd also be happy to hear from any adults who may be interested in volunteering to help run the units.*

Email: woodchesterbrowniesandguides@gmail.com or phone Jackie on 01453 821258

Longfield Hospice Update

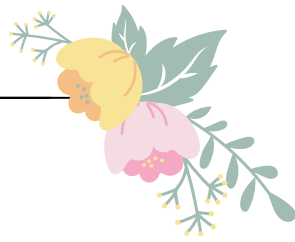
In case you didn't know, Longfield is a local hospice covering Gloucestershire with a range of free services. It has been supporting adults with a life limiting condition, their family and loved ones for over 35 years. If you think you could benefit from our help and care why not visit longfield.org.uk to find out more?

Longfield is a charity and 85% of our funding comes from donations? So, if you would like to get involved and help us be there for more people then why not organise your own fundraising event or take part in one of these two events coming up over the next few months? Contact the fundraising team to find out more on 01453 886868.

Walk for Longfield 2024 – Celebrate the summer solstice by walking 5k or 10k on Friday 21st June 5.30pm - 9pm at Minchinhampton. Sign up at www.longfield.org.uk/walk-for-longfield

Run the Rainbow 2024 – enjoy our summer colourful favourite on Saturday 29th June 2024 at Frampton Court. Sign up at www.longfield.org.uk/run-the-rainbow

We are also looking for volunteers who can help across a range of roles from our shops to community activities to volunteering at the hospice. Want to know more? Phone or email volunteering@longfield.org.uk to find out more.



Village Interest

Selection of stories on local interests

Woodchester Station: A Historic Hub

Many readers who are new to the area may not realise that the cycle path was once an important branch line off the main line at Stonehouse, running through Dudbridge to Nailsworth.

The line finally closed in 1966. Woodchester Station was where Station Road in South Woodchester meets the A46, nearly opposite Browns Woodyard. It was a wooden structure, just one platform and level crossing gates at the south end. There was once a siding into Browns woodyard.

It was far busier for goods traffic than for passengers. Traffic included coal, coke, limestone, timber goods, paper for Arthur's Press, sheep skins (for the Carr Tanning factory at Frogmarsh), farming materials and parcels. At one time in the late 19th century, the station was used by Victorian tourists visiting Amberley because of its link with the novel "John Halifax Gentleman". At the turn of the 19th /20th century, Woodchester Station had more parcels traffic than any other Midland Railway station in Gloucestershire.

My Mum's Mangle

How many readers have memories that take us back to our childhood days when Mondays were wash days? You will probably have to be in your 70s or 80s or even older to have experienced the slog of Monday washdays, when the boiler in the shed was lit, clothes were pounded around in the washtub, came out whiter than white (usually but not always!) and were then run through the rollers of the mangle to squeeze out as much water as possible. This was the way of life for so many people before the days of washing machines and tumble driers.

The picture here is of a 100 year old 'Neeta' mangle, rescued from Yorkshire a few years ago and restored to its original condition. Well, it saves on having to use the tumble drier now and it is good exercise for the arms!!



No, not Thomas; Troublesome Trucks!

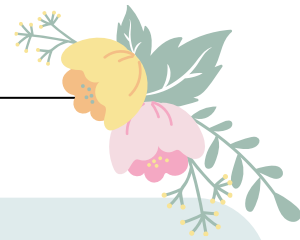
We all know of the problems that Thomas the Tank Engine had with his troublesome trucks, but the image below is a model of a private owner wagon linked with Woodchester. A fine model of the wagon used by Matthew Grist of Grist's Mill during the days when the Nailsworth branch was run by the Midland Railway.

When the wool trade collapsed in Gloucestershire in the mid to late 19th century due to competition from Yorkshire, several mills turned to alternative trades. One such activity was flock and shoddy manufacture. Flock was essentially woollen waste that was sorted, scoured, dried and shredded by passing through a number of toothed rollers. A variety of grades were made depending on its use, for example, for mattress and upholstery stuffing.

Shoddy was used to make a coarse fabric, manufactured from worn- out woollen cloth, unwoven, combed then re-woven. Rags and woollen waste came from all over Britain to be made into flock and shoddy. Rooksmoor Mills, Philpott's Mill, Inchbrook Mill and Dyehouse Mill (in Inchbrook?) as well as Merrett's Mill all specialised in the manufacture of flock and shoddy at some time during the last 200 years.



The Grist (Richard, William and Matthew) family was heavily involved in this trade and the name "Grist" became associated with this process over time. These trucks would have been used to bring in the raw materials and take out the finished products.



Our WI continues to thrive, and we would love to welcome more new members, an opportunity for women over the age of 18.

Our membership extends beyond Woodchester, we are joined by ladies from Amberley, Kingscourt, Leonard & King Stanley, Lightpill, Nailsworth, Rodborough, Selsley, Stonehouse and Stroud. A great chance to make new friends.

We started our year with Farewells and New Beginnings, an aptly titled quiz created by Sally. So far in 2024 we have enjoyed talks on Copper Foiled Stained Glass; Glorious Coloured Gemstones and proved our floristry skills in time for Easter.

The remainder of our years programme will include:

The Stonemason Guild of St. Stephen

Goats of the Gorge: an intriguing but misleading title. We have included music in our programme, namely The Stanley Singers and a talk involving a harp and its owners travelling the World.

Food has not been forgotten, there will be our **annual fish and chip supper and a Christmas Party**. We also must not forget our **AGM in November**.

We have monthly **Craft and Chat** sessions on the first Thursday of the month; 2 – 4 pm in the Village Hall, these meetings are open to non-members. Each session costs just £3 which will include tea/coffee and cake or biscuits. Craft is not obligatory, come along for the company. There is no Craft and Chat session if any elections are scheduled.

If you would like any further information please contact – Judy on 01453 873511 or Kath on 01453 873348

**Village Hall
for Hire!**

We all know the village hall. It is used regularly by a number of groups, including table tennis, pilates, yoga, the WI, the Village Parish Council, and others. It is also hired regularly for children's parties and other special family events. We are very lucky in Woodchester to have such a fine facility but it really is quite underused. It is empty more often than in use. Cost of hire is £11.50 an hour and for regular users there is a discounted rate. Enquiries can be made by emailing wvh2021@gmail.com or contacting the bookings secretary on 01453 872317. Below is a picture of an event held not too long ago, a Christmas Craft Market.



Woodchester Mansion

Woodchester Mansion is now open for the season!

Fridays, Saturdays, Sundays and bank Holiday Mondays until November 3 rd.

This amazing Gothic Revival country house was never finished. Building work stopped in the mid-1860's so floors and ceilings are missing, walls not plastered and windows unglazed. All the secrets of construction of the Mansion are visible – something visitors will never see in another country house. The architecture and quality of the stone carving in the Mansion is outstanding.

There are regular events and activities throughout the year including a Stone crafts weekend, Steampunk Festival and outdoor theatre. The Haunted cellars are not to be missed at Halloween!

Children will enjoy exploring the cellars, climbing the staircases, the discovering fascinating carvings of plants and animals in the chapel. There are also colonies of greater and lesser horseshoe bats which can be seen in detail on CCTV. A mini bus runs down the one mile long track every hour from the National Trust car park off the Nymphsfield Road and the tea room is open on open days. The Gift Shop offers an interesting range of books and cards.

Further details:
www.woodchestermansion.org.uk



Woodchester Word

Your Woodchester Word is delivered by volunteers. If you can help deliver a small number of Words to your local neighbours in North or South Woodchester, that would be very helpful in getting the Word to everyone quickly and spread the load a little more. Contact Rod on 872317 or woodchesterword@gmail.com
Thank you.

Business Directory

The Woodchester Word is now fully funded by the Parish Council and voluntary donations and is no longer taking paid advertising.

We propose to use this page as a local business directory. If you run a business which is based in, or serves Woodchester, you can send a 30-word text entry with brief details of your business and contact details, which we will include free of charge.

Dennis Brown Timber Yard

Complete timber specialists. T: 01453 873516. www.timber-yard.co.uk

Woodchester Cabinet Makers

Hand made bespoke kitchens and interiors. T: 01453 835580

Leopard Press. Printers and Stationers

Letterpress, litho, digital. T: 01453 872123

Woodchester MOT Centre

MOT's, tyres, repairs and service. Call Tony on 01453 873355

N Scotford

Your local garage for services and MOT's. T: 01453 873787

Woodchester Valley Wines

Quality Cotswold wines, tours, shop. T: 07523 967219

Julie Shere-Massey Art

Unique commissions capturing family pets or animals. T: 07743 001812

Stroud Chiropractor

Back pain, neck pain, stresses and strains, joints and muscles. T: 01453 763755

Woodchester Valley Village

Cotswold retirement village for active people.
T: 01453 837700

Plus One Design

Graphic Design Agency
T: 07768 095404

John Timberlake Web Design

Fast, affordable website design, maintenance and SEO. Squarespace and WordPress specialist. T: 01453 872183
www.johntimberlake.co.uk

Clive Amos Interior

Decorator
Woodchester based
T: 01453 872311 M: 07971530684

Letters, articles and items for publication should be sent to the editor, Rod Harris, at woodchesterword@gmail.com
Design: Brandy Beauchamp
Printed by Leopard Press.

The Woodchester Word is an independent publication and is funded by sponsors. The views expressed in this publication are those of the editorial team. We reserve the right to edit or omit any material submitted for publication. No liability is accepted for loss or damage arising from any omission of copy or advertising.

Useful Village Contacts

PCSO:

Steven Phillipson T: 101
or visit www.gloucestershire.police.uk

Neighbourhood Warden:

Chris James
T: 01453 754512, 07753 725185
E: chris.james@stroud.gov.uk

County Councillor:

Steve Robinson T: 01453 834270
E: steve.robinson@gloucestershire.gov.uk

Village Hall:

Mrs. Kath Gay,
T: 01453 873348
E: wvh888@btinternet.com
Bookings: Rod Harris
T: 01453 872317/07775 652379
E: WVH2021@gmail.com

Parish Council:

Mandy Rossiter, Clerk to Woodchester Parish Council T: 07920 103953
E: Clerk@woodchesterparish.org.uk
www.woodchesterparish.org.uk

Gloucestershire Highways:

www.gloucestershire.gov.uk/transport/
T: 08000 514514
E: www.gloucestershire.gov.uk/fixmystreet

Woodchester Post Office and Village Shop:

Shop: 01453 873218
Post Office: 01453 872581

St Mary's Church:

Rev Peter Francis, T: 01453 759680

Church of the Annunciation:

T: 01453 822121

Stroud Neighbourhood Policing Team

PC Kate FINCH
PCSO Candice FRANCIS PCSO Charlotte KING
Non-Emergency: 101 or
www.gloucestershire.police.uk/tua/tell-us-about
Emergency: 999
Anonymously Report to CrimeStoppers: 0800 555111
For other information visit:
www.gloucestershire.police.uk/

Neighbourhood Warden:

Carol NOVOTH
E: carol.novoth@stroud.gov.uk